

CREATING FUTURES



We dedicate this issue of *Creating Futures* to Bunnie Aaze, one of the principal founders of the Normandale Japanese Garden. Friends and family gathered in the Garden for a celebration of Bunnie's life in October 2021.



NORMANDALE
COMMUNITY COLLEGE FOUNDATION



MINNESOTA STATE



To our Normandale Community College Foundation community of supporters, I greet you with the renewed optimism that comes as we put another year behind us, this one filled once again with challenges never-before faced. We've spent the last two years delivering education and services in ways I would not have thought possible. Our faculty and staff have not only risen to the occasion, but have repeatedly surpassed my expectations.

Our students have adjusted, adapted, persisted and devised ways to overcome the many challenges of COVID-19.

Enrollment is strong among new students, but we see a decline in returning students that we attribute to pandemic fatigue, illness and the responsibility of caring for family members who have fallen ill or lost jobs.

As we work to provide students with the services critical to help them stay in school, I find hope and energy in your generosity as loyal supporters of Normandale students.

Your support buoys our students as they receive the wonderful news that they've received a scholarship that pays for half of a semester or emergency funding to cover an unexpected medical bill.

Your support has allowed us to dramatically expand our Campus Cupboard – a critical resource for the roughly one in three Normandale students who lack reliable access to food.

And last, but not least, your support helps Normandale pioneer new, innovative approaches to our state's most pressing problems. For example, our new Sirtify program, launched this year under the temporary name Black Men in Teaching, would not be the transformational opportunity we envisioned without the donors who are funding full-tuition scholarships for all the participants.

In a world that throws one curveball after another, you stand with us in cultivating a welcoming college community, fostering every student's talents and building an equitable world. Thank you.

Joyce C. Ester, Ph.D.

Joyce C. Ester, PhD
College President

COLLEGE PRESIDENT:

Joyce C. Ester, PhD

VICE PRESIDENT OF ADVANCEMENT & EXECUTIVE DIRECTOR OF NORMANDALE FOUNDATION:

Andrea Specht, JD

CREATIVE DIRECTION/DESIGN:

Neuger

EDITORS:

Foundation Advancement Staff

WRITERS:

Andrea Specht, Jane Fenton, Tipheret Peña, Devon Cox

PHOTOGRAPHY:

Devon Cox, Paran Kashani, Steve Geller

PRODUCTION MANAGER:

Jane Fenton

Normandale Community College Foundation
9700 France Avenue South, Bloomington, MN 55431-4399
952-358-8147 • foundation@normandale.edu

Creating Futures is published annually by the Normandale Community College Foundation. The Foundation depends on contributions from individuals, businesses, organizations, and the community to help respond to the educational needs of students of all ages. Normandale Community College Foundation is a 501(c)(3) organization. Tax ID: 41-1295802.

This publication also may be found on the web at www.normandale.edu/foundation or requested in alternate media by calling 952-358-8623.

If you have received duplicate copies or would like to have your name removed from our mailing list, please call 952-358-8147.

Normandale Community College, a member of the Minnesota State system, is an equal opportunity educator and employer.



NORMANDALE
COMMUNITY COLLEGE FOUNDATION



ON THE COVER:

Sculptor John Sterner of Southwest State reveals his thoughts on the creation of the sculpture in memory of Bunnie Aaze. Former Normandale Presidents Horak and Bryant spoke, recounting their gratitude. Longtime Japanese Garden volunteers hosted the event and advised on the new signage that debuted that evening. Many thanks to Brian and Karen Holcomb, Roxanne and Tom Senne and Lynn Aaze for creating a magical evening.

THRIVING & THANKFUL

Dear friends,

The Normandale Foundation has new offices on campus, and we're working in person three days per week!

The foregoing sentence would not typically end with an exclamation point, but after two years of working from home, the move back to campus and into a brand-new office suite feels more than a little noteworthy.

During those two years, the world has changed in ways we never could have foreseen. We would have told you that the Normandale Foundation's work could not be done remotely. We exist to connect with people.

But we were wrong.

In fact, the Normandale Foundation held two of our most successful fundraising events of the last decade in 2020 and 2021 – virtually. Your support made this happen.

When it was not possible to hold our annual Scholarship and Donor Recognition Celebration in person, we produced a well-received video of students describing the difference a scholarship makes. You also made that possible, even during a pandemic.

Normandale students, faculty and staff pressed on despite the obstacles of isolation, technology challenges and dramatic disruptions of many of the things we all hold dear and count on. You hung in there with us the whole way, and we took heart. **Your trust and faith have sustained all of us at Normandale during the last two years. We want you to know that we didn't just survive, we thrived.**

In addition to raising an unprecedented amount in unrestricted contributions – the lifeblood of the Normandale Foundation – we added many talented, diverse professionals to our board of directors and launched a new online scholarship management portal to substantially simplify the processes of applying for and awarding scholarships. The reward? A record number of scholarship applicants in 2021.

Thanks to you, we continue to fund the larger orders of food and personal hygiene supplies needed to keep Normandale's expanded Campus Cupboard stocked for students, while working hard to destigmatize its use. The College's Phi Theta Kappa honor society has stepped up to help with a communications effort, leading to increased usage month by month.

On behalf of the Normandale Foundation Board and staff, thank you again for your loyal, generous support.



Andrea Specht, JD
Vice President of Advancement &
Foundation Executive Director



Rome Poppler
Foundation Board Chair



Andrea Specht and Sirtify student Tabb Christopher at the Sirtify (then called Black Men in Teaching) program launch in August.



Rome Poppler and his wife Stacey Poppler are not only Normandale alumni – in fact, they met in a Normandale composition class!

Long time, no see!

You may have wondered where we've been. Usually this report comes out in November, just after our fiscal year ends on June 30.

Usually we have our Creating Futures event in October, then complete our audit, then produce this publication so we can let you know what we've done with your gifts. Because of COVID-19-related complexities, none of those things happened on their customary timeline this year.

You were always on our minds, however! Please enjoy this annual report for July 1, 2020–June 30, 2021, with audited financials and up-to-date stories.

If this magazine inspires you to give in this fiscal year that ends **on** June 30, 2022, we would be delighted.

You are the difference-makers around here. Please visit www.normandale.edu/foundation and click the "Give Now" button to support Normandale students.

Creating Futures

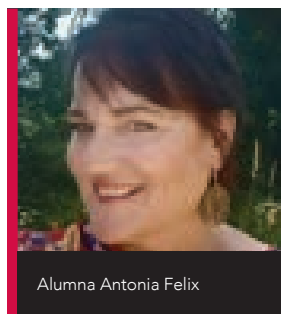
VIRTUAL EVENT RAISES OVER \$161,000

On November 18, 2021, a virtual *Creating Futures* event helped the Normandale Foundation raise over \$161,000 to help Normandale Community College reach its full potential.

Like last year, the event was virtual, and it included both live and recorded segments that highlighted alumna **Antonia Felix** and now recent graduate **Nontapat Kultangwatana who goes by "Adam Kult."**



Student Nontapat "Adam Kult" Kultangwatana



Alumna Antonia Felix

A Passion to Perform

Antonia arrived at Normandale in the 1970s as a music student, hoping to one day play bassoon professionally in an orchestra. She was later able to transfer her credits and experience to a four-year university, where she excelled as both a bassoon player and as a vocal performer. She

went on to not only become a professional opera singer, but a New York Times bestselling author of 25 books, which include biographies of Senator Elizabeth Warren and Supreme Court Justice Ruth Bader Ginsburg.

"I never knew that people are so cool here. They're so helpful, giving someone encouragement to carry on."
– Adam Kult

A Renewed Sense of Purpose

Adam is an immigrant from Thailand and spent 16 years there before coming to Minnesota. After struggling to decide what he wanted to study and a year-long suspension, he returned to Normandale with a renewed sense of purpose. Adam shared his story and said, "I never knew that people are so cool here. They're so helpful, giving someone encouragement to carry on ... Knowing that I'd failed before. It really touched me in a way that inspired me to do well at Normandale." Adam graduated from Normandale in the fall and is headed to the University of Minnesota, where he plans to major in linguistics.

The Normandale Foundation is immensely grateful to our generous Board, who issued a \$50,000 matching challenge, as well as our corporate and Foundation partners, and Normandale's devoted staff and students who all made this inspiring and prosperous event possible!

THANK YOU TO OUR EVENT SPONSORS

Leadership Sponsor

John E. Desmond & Janet C. Desmond Foundation

Presenting Sponsors

iSpace Environments
JE Dunn Construction
JNBA Financial Advisors
UCare
Xcel Energy

Supporting Sponsors

Ameriprise Financial
ASI Signage Innovations
Blue Cross and Blue Shield of Minnesota
Frauenshuh Commercial Real Estate
HGA
Mall of America
Sunburst Chemicals
UHL Company Inc.
Wells Fargo

Friends of Creating Futures

Arcade Electric Co.
Design A Bunch Floral
Edward H. Cook & Associates, P.A. Mechanical Engineering Consultants
Larson Engineering
Mighty Consulting
Organizational Change Advisors

Matching Sponsors

3M
Bremer Bank

WELCOME, NEW BOARD MEMBERS

The Normandale Foundation is pleased to introduce the new members of our Board of Directors, who joined us last fall. Pictured from left to right, **Pat Moyneur**, Senior Advisor at JNBA Financial Advisors, has vast experience in the financial services industry and brings his expertise and client-focused skills to our Board. **Janet Freudenstein**, Senior Talent Development Consultant at Blue Cross and Blue Shield of Minnesota, joins us with an extensive background in organization and leadership development, as well as wide-ranging experience as a consultant. **Charles Vickers**, Culture and Climate Specialist at Robbinsdale Area Schools, has profound knowledge and skills in the education

field, and promoting equitable learning environments that will help the College reach its goal of eliminating race-based gaps in key educational outcomes. **Leonard Cain (Cain)** is also an experienced educator and has devoted his life's work to designing and implementing intensive practices in school environments. Cain now currently serves as the Student Support Interventionist at Love Works Academy for Visual and Performing Arts. **Beth Monsrud** is the Senior Vice President and Chief Financial Officer at UCare and comes to us with great financial leadership experience and strategic skills that will be of immense value to our Board.



Thank You, Retiring Board Members

It is never easy to say goodbye, but we do it with a deeply grateful heart for our Board members who ended their terms in the past year. Pictured on the right, attorney **Paula Forbes** led us in strategic planning, equity and inclusion. Not pictured, but equally treasured: **Mark Adkins**, wealth advisor for Merrill Lynch, led us for two terms as chair and steered us through leadership transitions. **Duane Spiegle**, Vice President of Real Estate at HealthPartners, was a consummate relationship-builder. **Gina Hall**, Vice President at HealthPartners, helped us build our program with the Japanese Garden. **John Herman**, retired Vice President for Fairview, was a stalwart supporter, always generous with support and advice.





EMPOWERING SELF-CONNECTION

Shianne Judge

"I'm from a really small town in Minnesota, just under 2,000 people. It's two miles by two miles – a total drive-through town. My mom went to Normandale and all my cousins did. Normandale had lots of different classes I was interested in, and I found my favorite – psychology – which is now what I'm going for.

I'm taking a Minnesota history course this semester, which has been really interesting because it's mostly about Norseman and Native American history, which is my whole bloodline, and I relate to both sides of it. I've been reconnecting

with my Inuit culture, but there's not many [Inuit] people in the United States to learn about it from. I learned a lot from my uncle when I was young, but since then I've been trying to learn the language and the mythologies. I want to go to Canada, Ireland and Egypt and experience all kinds of different cultures and places."

Shianne is a recent recipient of the David B. Jones Scholarship through the Normandale Foundation. The David B. Jones scholarship supports Native American and Indigenous students, as well as those who are underrepresented and have been historically excluded in higher education.



MEET OUR NEW ANNUAL FUND & SCHOLARSHIP MANAGER!

My name is Tipheret Peña (she/her), and I am the new Annual Fund and Scholarship Manager at the Normandale Foundation.

I grew up in a suburb near the Twin Cities and later attended the University of Minnesota, graduating in 2017. There, I studied English and professional journalism and minored in gender, women, and sexuality studies. During my time at the U, I routinely served as a resource for students in my roles as a Community Advisor and as an advocate and educator at the university's sexual violence center.

I joined the Normandale Foundation team in September and have been working primarily on improving the scholarship application process but will soon be working with mid-level donors as well. I have loved getting the opportunity to work with students again and play a small role in their educational journeys. I am grateful to be a part of a team that is so dedicated to the advancement and success of Normandale and its students.

Craig & Robin Dahl

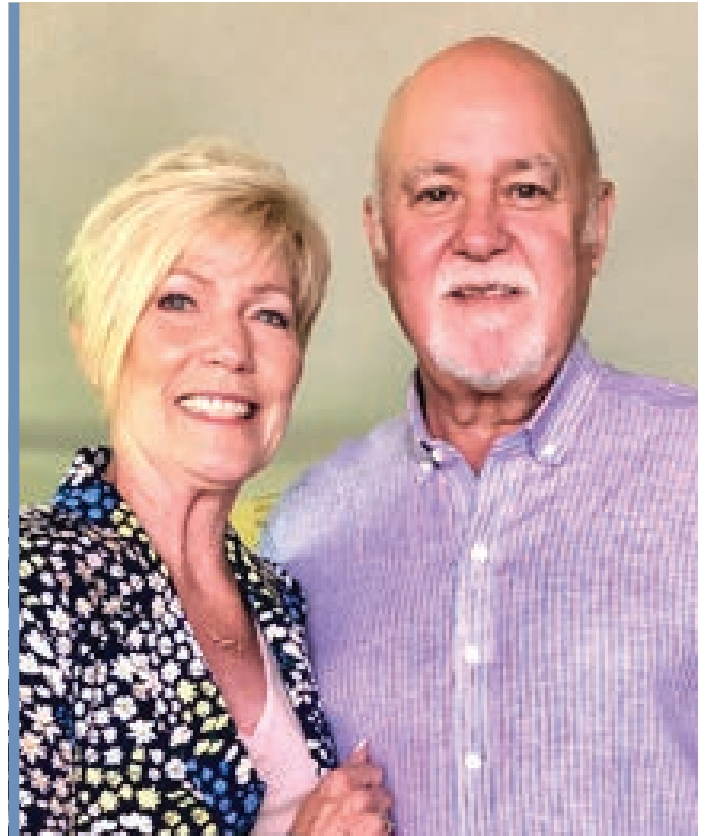
DATA-DRIVEN IMPACT

Right from the beginning, Normandale’s vision for Sirtify (launched under the temporary name Black Men in Teaching) encompassed a pivotal role for the Normandale Foundation in raising substantial funds to provide full-tuition scholarships for participating students. The Normandale Foundation eagerly accepted this assignment, and as we expected, Sirtify’s mission is resonating with donors like Craig and Robin Dahl.

The Dahls see a clear pattern in the numerous causes they support, which include children’s cancer research and care, Make-A-Wish, charter schools and more. “We always seem to come back to the kids,” they say.

The Dahls’ interests in children’s health and wellbeing and in education inspire them to give generously of their time and expertise in addition to their financial resources. For example, Robin was one of the dedicated volunteers who founded the special event now known as FashionFest – a benefit that raises funds for crucial, life-changing pediatric services, programming and activities at the University of Minnesota hospitals. She has chaired or co-chaired the event three times since its inception in 2012, and with her leadership, FashionFest has raised a total of more than \$1.5 million!

The Dahls first learned about Normandale’s impact and opportunities to support it through Craig’s college classmate and longtime friend Andy Kannenberg, a Normandale Foundation Board Member. Andy invited the Dahls to a few fundraising events where Normandale students and alumni made a big impression. “The speakers at the event and the students seated at our table showed such poise and dedication to bettering their lives,” says Craig. “Both Robin and I came away with [the idea that] we can do something here. In addition, it is almost a secret that Normandale Community College is the largest community college in the state, it just seemed underrepresented in overall fundraising and community support.”



Fast forward to 2021 and the launch of Sirtify – a turning point in the Dahls’ level of interest in Normandale. This program “just seemed like the right move for the school to make,” Craig remembers. “I love data-driven decisions and to learn about how [Black students’] odds improve for high school graduation and college enrollment when there is a Black teacher in elementary school, it just seemed like something new and something we could get behind.”

Like the retired bank executive that he is, Craig is quick to point out that he is eager to see the return on the Dahls’ charitable investment in Sirtify. “We have been very excited by all our interactions but at the end of the day, [Normandale and Sirtify have] to deliver the product. We want to stand in there with them as this begins to gain momentum.”

The Normandale Foundation is deeply grateful to Craig and Robin for their pioneering, generous support for Sirtify.

SIRTIFY PROGRAM LEARNS & GROWS ALONGSIDE ITS STUDENTS

Normandale's new Sirtify program (initially known as Black Men in Teaching) launched in fall 2021 with an ambitious vision: a world where Black, African American and African men have the tools, skills and support necessary to rewrite the negative narratives placed upon them by society. Under the leadership Program Coordinator Marvis Kilgore, this program recruits Black, African American and African men to Normandale and supports them throughout their first two years on the path to becoming licensed K–12 teachers.¹

At the outset of spring semester 2022, Kilgore took the opportunity to reflect on Sirtify's early successes and lessons learned, as reflected in the questions and answers below.

How many students are participating in Sirtify? How does that compare to your goal for year one?

Kilgore: We have a total of six Sirtify students this spring – three who started in fall 2021 (Cohort 1) and three who just started (Cohort 2). Our goal was to have five students in year one, so enrollment and interest in the Sirtify program count among our early successes!

What can you tell us about the Sirtify Fellows as a group? Any surprises?

Kilgore: 100% of the men in Cohorts 1 and 2 are non-traditional students, meaning that they came to Normandale at least several years after graduating from high school. All have substantial work experience (most within the education field), and many are parents. These circumstances – specifically, the many responsibilities our first cohorts are juggling – led to a number of “aha” moments this year in the form of lessons learned and program adjustments made. We will continue to learn and adjust as the Sirtify Program matures.

¹Although Minnesota's K–12 student populations continue to become more diverse, school districts throughout the state struggle to hire faculty and staff who reflect the diversity of their student bodies. According to a real-time labor market analysis, only 7% of elementary education teacher candidates in the Twin Cities are people of color. Further, from 2007 to 2017, while the students of color population in Minnesota grew from 24% to 34%, teachers of color only increased from 5% to 5.2%. Black men make up less than 1% of teachers in our state.

Do you expect the Sirtify Fellows to become more diverse in terms of age and educational/work experience as the program evolves?

Kilgore: Diversity of age and educational/work experience is a goal we are taking steps to achieve within the program. For example, we are building on our early recruitment activities to now include more visits to high schools to promote Sirtify as a great option for graduating seniors.

What are the key lessons learned in Sirtify's first year?

Kilgore: One of the most important lessons learned was to make the academic course load manageable for the Sirtify students given their competing responsibilities. We initially expected Sirtify to center on full-time study. But expecting students to take a full load of 12 credits (four or five classes) – and be successful in them – was not compatible with their reality of juggling parenting and other family commitments, full-time work, etc. Also, managing the overall transition to college (or back to college) proved a challenge for some of our students. Once these things became clear, we swiftly adapted to develop a participation track geared to non-traditional students like the men in the first cohorts. In this track, the students take nine credits – equivalent to 75% of full-time study. It's rewarding to note that with this change, all of the students in Cohort 1 successfully completed their first semester and re-registered for spring.

We also learned the importance of helping our students start the semester strong by ensuring that they had all required textbooks and were able to access all online materials for their courses no later than the first day of classes. This realization motivated me to develop the *Start Strong Academic Preparation Series*, which guides the Sirtify students through a series of academic preparation processes that ensure students are ready for the first day of class.



Sirtify Coordinator Marvis Kilgore (center) with members of the spring 2022 student cohort (left to right) Abdirahman Hassan, Tabb Christopher, Charmont "Teddie" Lee, and Giovanni Saunders

What other forms of support are Sirtify students receiving in this first year of the program?

Kilgore: As part of the *Start Strong* approach, I start holding one-on-one meetings with all Sirtify students at the start of the semester. We discuss their classes and schedule for the upcoming semester and log into D2L [Normandale's electronic platform supporting teaching and learning] to locate all course materials. During subsequent one-on-one conversations, I spend considerable time answering any questions and addressing a range of concerns Sirtify students have. Starting strong is important, and we build on that with effective, tailored communication throughout the semester.

As you look ahead to the spring 2022 semester and beyond, what's on the horizon for the Sirtify program that excites you? Anything about cohort-based trips or other activities?

Kilgore: There are many exciting things on the horizon. Cohorts 1 and 2 will participate in a spring Sirtify retreat at the Richardson Nature Center, made possible by a grant from the Prime Together Foundation. Also, we are establishing numerous partnerships focused on recruitment and future job placement options for Sirtify students. For example, the Eden Prairie Public School System (EPPSS) has secured a Grow-Your-Own Grant to help create a pathway for Sirtify students to full-time employment with the EPPSS. This collaboration would include tuition and book stipends for Sirtify students who go on to earn their teaching degrees at Metro State University. After graduating from Metro State, the EPPSS would offer full-time employment as a fully certified teacher.

Thanks to generous Normandale Foundation donors and State of Minnesota Workforce Development scholarships, each Sirtify student receives a scholarship of up to \$10,000 per year for two years – enough to cover full-time tuition, fees, supplies and books, plus a stipend toward the cost of living. Sirtify students also receive intensive academic and career support and coaching and participate in cohort-based enrichment programs and experiences.

GET INVOLVED

To learn more about the Sirtify program, contact Program Coordinator Marvis Kilgore at marvis.kilgore@normandale.edu or 952-358-8211. To make a charitable gift in support of Sirtify, contact Normandale Foundation Associate Executive Director Jane Fenton at jane.fenton@normandale.edu or 952-358-8143.

LOOK HOW WE'VE GROWN

Revisiting the Campus Cupboard and the Student Resource Center



Left to right: Normandale Student Senate President Daniel Georgioff, LeadMN President Axel Kylander, Normandale President Joyce Ester, and Campus Cupboard Manager Paige Wheeler

HOLISTIC BASIC NEEDS SUPPORT

The Campus Cupboard provides any Normandale student with fresh, frozen and shelf-stable foods, meals and hygiene items. Right next to it, the Student Resource Center connects students to campus and community resources and services to help them overcome barriers that interfere with their academic success. These resources and other services on campus allow Normandale to holistically meet students' basic needs, giving them the support to meet their goals and have academic success.

MOVING TO A NEW, PERMANENT SPACE

This summer, the Campus Cupboard and Student Resource Center moved to a new, permanent space in the Activities Building. We gained square footage, giving us storage space and room for expansion if needed. Our offices are now next to one another, thereby easing student use and awareness of these basic needs support services.

FRESH MEALS ARE HERE TO STAY

The pilot program we were using at Second Harvest Heartland's Minnesota Central Kitchen became a permanent part of their programming, and we now get free pre-prepared meals every week. So far this academic year, we have distributed nearly 2,600 meals to students.

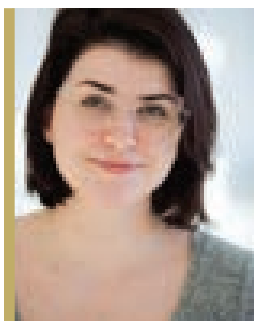
AWARD-WINNING EFFORTS

LeadMN, the statewide advocacy group for all community college students, awarded Normandale with the "Hunger-Free Campus" designation last fall. Criteria include running a food shelf, supplying education on SNAP benefits and hosting a taskforce.

EXPANDED STUDENT USAGE

The Campus Cupboard has expanded the number of students and households served. From the start of fall semester through the start of March, 740 unique students visited the Campus Cupboard, a 92% increase over the prior year. The Campus Cupboard not only supports students, but their households as well – and so far this year over 2,600 household members, including over 700 kids, have been served. The Campus Cupboard has had over 2,600 visits (a 36% increase over the prior year) and distributed nearly 28,000 pounds of food (a 32% increase over the prior year).

This expansion is made possible due to the generous support of our partner nonprofit, Hope for the Community, and their President and Founder and Normandale alum, Alan Goracke. Hope for the Community has donated food, equipment and reusable bags.



"Starting with a half-finished room and a vision, we were able to transform the space – piece by piece – into a welcoming environment that will allow us to readily connect with students in need. Sharing this space with the Campus Cupboard has solidified our connection as we unite to meet students' basic needs."

– Aria Quinn, Student Resource Center Coordinator

FEEDING STUDENTS AND THEIR FAMILIES HELPS THEM STAY ENROLLED.

96%

of students said the Campus Cupboard helps them concentrate in class

"The extra time I have saved by using the Campus Cupboard has certainly enabled me to study for longer, positively reinforcing good study habits."

92%

of students said the Campus Cupboard improved their access to nutritious food

"It gave access to healthy foods that I wouldn't have been able to afford myself."

"I'm in the Nursing Program, so I'm unable to work full time. Most of my income I do have goes straight to rent and other bills. There were times I was unable to buy food for myself, but I was able to shop at Campus Cupboard and make nutritious breakfast, lunch and dinners for myself each day."

"I am a single parent, and this program has help me so much throughout the fall semester. It has supported me and my three-year-old son."

*Source: fall 2021 student survey

Francisco Ramirez,
Supervisor, Community Health & Outreach, Fairview Health Services

BUILDING COMMUNITY HEALTH

"I'm from Mexico, from Guadalajara, and then I moved to San Francisco and was there for eight years working as a health educator. In 2012, I moved to Minnesota. When I was working at Fairview Hospital Southdale, I saw the possibility of doing the Community Health Worker (CHW) program at Normandale and was lucky enough to attend.

In the program, I had the opportunity to get to know people from different backgrounds. When you grow up in a community, for me the Latino community, and you are not exposed to other things when you're growing up, everything changes when you move to a country that has a diverse community and people from different countries and backgrounds. When I moved from California I wasn't expecting to see many immigrant communities, and I was surprised because [Normandale] is so diverse. I was blessed to have the chance to learn from other students in my class coming from different backgrounds: from the Somali community, the Hmong community, African Americans, Latinos and Caucasians. It was awesome to get to know them better and learn what's culturally appropriate and what's not because that's extremely important when your work is to build trust in the community.

The CHW program was also a great opportunity to explore how to provide health services that aren't in a doctor's office. We know that about 80% of



health is about what happens outside the clinic or hospital. There are lots of things that are affecting the health of our communities, so we need to work with them where they live, where they feel safe and keep working together.

The CHW program is a bridge – community health workers are trusted, knowledgeable, frontline healthcare personnel. We typically come from the communities we serve and bridge cultural and linguistic barriers to expand coverage and care to improve health outcomes. No matter how old you are, the CHW program is a great opportunity to grow and learn to better serve – this program has so much value in the way we're working with the health system to be better for our diverse communities. Come to Normandale!"

Jubilee Gifts (\$100,000 to \$499,999)

Estate of Carl E. Carlson
David B. Jones Foundation

Trustee Gifts (\$50,000 to \$99,999)

Craig and Robin Dahl
Gunter Stein

Regent Gifts (\$25,000 to \$49,999)

John E. Desmond and Janet C. Desmond Foundation
Donaldson Company, Inc.
Alan and Pamela Goracke
Hope for the Community
Marion and John Johnson, in memory of Olivia Chutch
Kopp Family Foundation, in memory of Bev Horak

Chairman Gifts (\$10,000 to \$24,999)

Chorzempa Family Foundation
Julie and Bob Guelich, in memory of Joan P. Spivey
Hunger Solutions Minnesota
Mains'1 Services
Otto Bremer Trust
Allan and Debby Schneider
Xcel Energy Foundation

Bloomington Rotary Club Foundation (Noon)
Chanhassen Rotary Foundation
Erin and Stephen Daly, in honor of Lisa Wheeler
Disabled American Veterans Minneapolis Chapter No. 1 Inc.
Judy and Charles Dunne, in honor of Manley Olson and Ann Olson
Bob and Nancy Erickson
Tom and Pam Gallahue, in memory of Bev Horak
John and Diana Herman
Mark and Rita James, in honor of Don Reznicek
Andy and Kathryn Kannenberg
Lakeville Area Schools
Normandale Community College
Debra A. Olson
Ryan Olson, in memory of Debra Olson
Rome and Stacey Poppler
Alice and Fred Seagren – Seagren Family Charitable Fund, in memory of Bev Horak
Kim and Pete Segar
Andrea Specht
Duane and Susan Spiegle
Stiles Foundation – Don and Leslie Stiles
Tim Stommel, in memory of Jason Horak
John and Nancy Van Sicken
Lori and Tony Vertin
Jim and Linda Wallace
Wells Fargo Commercial Banking

Al and Cathy Krug
Larry and Betsy Lee
Ernie and Jeanne Lindstrom
David and Sue Mathieu
Jodee McCallum
Anne C. McElroy, in memory of Bev Horak and Jason Horak
Microsoft Corporation Matching Gifts Program
MinneAnalytics
Jason Moore
Tim Moyer
Mark and Colleen Nagel, in memory of Stephen X. Sullivan
Tom Naughton, in memory of Bev Horak, David Docter and Joan P. Spivey
Nekola Family Charitable Fund of InFaith Community Fdn
Okada Family Trust, in memory of Edward Okada
Joe P. Opatz
Jared Orkin
Wendy Pajor
Park Dental Foundation
Lynn M. Phillips-Gaines
Ona and Wayne Pinsonneault
Thomas and Kristen Rash
Peggy and Peter Rejto, in memory of Bev Horak and Paul Desjardins
Don Reznicek
Mary Rice, in Memory of Richard Brown
Rotary Club of Chaska
Amy L. Sheldon, in memory of Paul Desjardins

Linda Ester
ExxonMobil Foundation – Matching Gifts Program
Patrick Fingerson
Charles Frame, in honor of Lisa Wheeler
Carol Fung Kee Fung
Carrol and Bernie Gaub
Geoff and Janny Gothro
James Grenier
Beth E. Grund, DNP
Lisa Harris
Regina Harris
Tom and Jolene Hart
Lyman Hawbaker, in honor of Lisa Wheeler
Scott Helgeson and Laura Preves Helgeson
Camille Helou
Chris and Melinda Hiepler
Jeffrey Hudson
Kristina Keller
Michael Kirch and Brad Wallenberg
Susan Knudson
Kraus-Anderson Companies, Inc.
Randy Krivo, in honor of Michael Krivo
Susan H. Krook
Larson Engineering, Inc
Mike and Megan Lebens
Jane Linden
Betsy and Jesse Longley
Doug and Sharon MacDonald, in memory of Paul Desjardins
Devinder and Laura Malhotra
Doug and Karen McElrath
Leo Mielke, in memory of Joan P. Spivey
Aaron Moe
Beth Monsrud
Erni and Naoya Nobuhiro, in memory of Frank and Kimi Yanari
Karen and Bud Nordstrom
Julie and Michael Nybakken
Patrick L. O'Donnell
Carol Ann and Doug Ogren
Oracle Matching Gift Program
Susan Peters
Penny Peterson, in honor of Lisa Wheeler
Bailey Pham, in honor of Josh Villas
Lindsay Pomeroy and Carol Brown
Gaye E. Pope-Carlson
Linda Pribyl, in honor of Jason Cardinal
Kathleen Prudhomme
Kay and Victor Rudek
Annamarie and Rick Schalk, in honor of Andrea Specht
Greg Schou, in memory of Joan P. Spivey
Roxanne Senne, in memory of Bunnie Aaze
Christine Solso and Bob Huber, in honor of Andy Kannenberg
Tom Sundquist
Frank and Maria Techar, in honor of Julie Guelich
Andy and Amy Tix
Toyota Matching Gift Program
Bill and Elaine Treacy, in memory of Bev Horak
Josh and Hollie Villas
Barbara R. Wilson, in memory of Nikki Abramson

Educator Gifts (\$250 to \$499)
Sunny J. Ainley
Ralph and Becky Anderson
Anonymous Donor
Jim and Renee Baglio, in memory of Bev Horak, Joan P. Spivey and Paul A. Desjardins
Norm and Susan Bartlett
Robert Behler, in honor of Jason Moore
Robert J. Bergeron, in memory of Bev Horak
Teresa Biss
Kristin Boda
Terry D. Bongard, in honor of Benjamin Balto-Bongard
Aaron M. Brosier

THANK YOU 2020–2021 DONORS!

This list recognizes cumulative gifts made to the Normandale Foundation between July 1, 2020, and June 30, 2021.

Dean Gifts (\$5,000 to \$9,999)

Lynn Aaze, in memory of Elvia "Bunnie" Aaze
Alan Abramson
Mark Adkins
Pat and Sydney Bonnie
Chorzempa Family Foundation
Consulate of Mexico
Jim and Tamarra Giertz
Brian and Karen Holcomb, in memory of Bunnie Aaze
Thomas J. Horak, in memory of Bev Horak and Jason Horak
iSpace Environments
Nancy M. Johnson, in honor of NCC Students and Olivia Chutch
Estates of Donald and Ramona Johnstone
Cindy M. Koopman and Steven Porter
The Minneapolis Foundation
David S. Niekerk, in memory of Toyel Niekerk
Manley and Ann Olson, in honor of Charles Dunne, Judith Dunne, Lisa Wheeler and Bev Horak
Joel Peterson
Bob and Sally Purvis
Shakopee Rotary Scholarship Foundation
Thomson Reuters
Rask Family Foundation
Mae and Sylvester Weiss Foundation
Gil Williams

Ambassador Gifts (\$2,500 to \$4,999)

Anonymous Donor
Olufemi and Balikisu Banjoko

Chair Gifts (\$1,000 to \$2,499)

American Dental Partners Foundation
Ameriprise Financial Gift Matching Program
Anonymous Donor
Linda Armstrong
Waldo Asp, in memory of Paul Desjardins
Shirley and David Beil, in memory of Joan P. Spivey
Henry and Diane Benz
Berry Global
Kathleen Blatz and Gregory Page
Colleen M. Brickle and Dennis Cummings, in honor of Lisa Wheeler
Brightline Group
Ted and Joan Brinkman
Community Dental Care Foundation
Patrick Corder and Dorothy Doyle
Stephen and Erin Daly
Calleen and Harry De Oliveira
Joy and David Drummond
Joyce Ester, PhD
Jane Fenton and Michael Gunderson, in honor of Lisa Wheeler and in memory of Bev Horak
Paula Forbes
Scott Grossbauer
Paul and Nancy Gubrud
Jane Guelich
Dara and Guy Hagen, in honor of Lisa Wheeler
Gina Hall
Robert and Kathleen Hauer, in memory of Bev Horak
John and Yvonne Huizinga, in memory of Bev Horak
Michael and Kimberly Jackelen

Rick Staunton, in honor of PSEO Teachers at Normandale
Gerald D. Swarsensky, in honor of Lisa Wheeler and Stephen X. Sullivan
Jerry S. Thornton, in memory of Bev Horak
Bill Tresham
Jane Welch and Dan Schowengerdt
Lisa and Rick Wheeler
Xcel Energy
Dennis and Michelle Zuzek

Mentor Gifts (\$500 to \$999)

292 Design Group
Anonymous Donor
Torrior Amie
Craig Amundson
Judith Anderson, in honor of Mark Adkins
Susan M. Ant, in honor of Jane Erbele and Lisa Wheeler
Angie Arnold and Jack Kronebusch, in honor of Lisa Wheeler and Roxann Arnold
Bank of America Foundation
Cyrus Batheja
John Benziger
Becky and Tom Bergman
Kris Bigalk
Joseph Bueltel
Debra L. Carlson
The College of St. Scholastica
Brenda T. Dickinson
Tracey Doi, in memory of Ray Chikahisa
Marybeth Dorn
Mary L. Ernst, in memory of Bev Horak

Ben Brucciani
 Diane Buntrock, in memory of Debra Olson
 Anne and Sean Byrd, in honor of Shelby Lengyel and Nora Sonneborn
 Becky Cahn
 Jason Cardinal
 Clifton Chang and Melodee Carlson Chang
 Douglas Claycomb
 Nancy Claycomb
 Cece and Steve Cope
 Kathleen Corley
 Aimee DuBois and Brian Klosa, in honor of Lisa Wheeler
 Anthony H. Dunlop
 Karen and Ed Fenton
 Joann and Mark Friesz
 Steve Geller, in honor of Lisa Wheeler
 Bob and Rhonda Gibbs
 Girl Scouts of Minnesota
 Ed and Karen Gleeman
 Courtney Hauer, in memory of Bev Horak
 Brooks Herrboldt
 Dennis Johnson
 Perry Judd, in memory of Bev Horak
 Anne Kaintz Peterson
 Barbara Kenner, in memory of Bev Horak
 Bryan Klein
 Cary Komoto
 Norma A. Korschak
 Thomas Kraack
 Bruce Krupnick
 Amy and David Lau Fong
 Syd and Abby Libsack
 Harry M. Lightsey
 Virginia Lorang
 Gene S. Luckfield
 Tom Maltman
 Joni Meilahn
 Reed and Joan Nelson, in memory of Bunnie Aaze
 Kristine Newcomer
 John M. Olson
 Shari Otterblad and Terry Stirewalt
 Judith and Richard Pett
 Harini Pichumani
 Joanna M. Piotrowska
 Prime Therapeutics
 Tony and Elena Procaccini
 Catherine Pulling
 Akshay R. Rao
 Gary Schokmiller
 John Schuerman
 Dave and Julie Sellergren, in memory of Bev Horak
 Karen Snedeker
 Mary Solverson, in honor of Lisa Wheeler
 Anna Stinson
 Terry Stirewalt and Shari Otterblad
 Brooke and Thomas Thaden-Koch
 Diane V. Thibodeau
 David and Karen Tsurusaki
 Beth Warner
 Wells Fargo Educational Matching Gift Program
 Paige Wheeler, in honor of Lisa Wheeler
 Kathryn Wijesinghe
 Andrew Wright
 Lori York
 Alice Young

Dean's List Gifts (\$100 to \$249)

Grace Adofoli
 Cheryl Adolphson
 David A. Agin
 Mark Ahrens
 Nobuhiko Akimoto
 Gay Allworden
 Gary Anderson, in memory of Bev Horak
 Pete and Denise Anderson, in memory of Debra Olson

Anonymous Donor
 Carole Appleby, in memory of Bev Horak
 Bob Barni
 David and Karin Barrett
 Nick and Karen Basil
 Judith and Ed Benka
 Brian Bergeron, in memory of Bev Horak
 Glen and Tanya Bergeron, in memory of Bev Horak
 David Berner
 Nancy and Kenneth Bernier
 James Billigmeier, in memory of Bev Horak
 Merlyn Boese, in memory of Bev Horak
 Carol Brown, in memory of Richard E. Brown
 Bernardine Bryant, in memory of Bev Horak
 Jeff and Greta Brynildson
 Tom Burgess
 Larry and Debra Carlberg
 Chipotle Mexican Grill
 George Chresand, in memory of Richard E. Brown
 Neil Christenson
 Johan Christopherson
 Alan and Paula Cole, in honor of Lisa Wheeler
 Carol A. Connelly
 Christine and John Conte, in memory of Ray Chikahisa
 Michael D. Cummins
 James and Judith DeMuth, in honor of Erik Burns
 Nicole Desjardins Gowdy, in memory of Paul Desjardins
 Carrie Dickson, in honor of Lisa Wheeler and Stephen X. Sullivan
 Marilyn A. Eckerle
 Robert Egge, in memory of Bev Horak
 Jenny Erickson
 Stephanie Erickson
 Steve Fager
 Vicki Fenton
 Leslie Flashing, in memory of Bev Horak
 Peter and Lois Flynn
 Karen A. Ford
 Robert Frame, in honor of Lisa Wheeler
 Jim and Kelly Frankenfeld
 Dave and Cathy Gallahue, in memory of Bev Horak
 Kay Gibbon-Lee
 Jim and Ginger Giefer
 Andrea Glomski, in memory of Debra Olson
 Phyllis Goranson, in memory of Richard Brown
 Matthew Gram
 Kathy A. Gremillion, in memory of Stephen X. Sullivan
 Melissa Gross and Brian Henning
 Darel Gustafson
 Karen Hanson, in memory of Bev Horak
 Janice H. Hardin
 Tom and Jennifer Harmening
 John A. Haugen and Alicia Reeves
 Sheryl Heger
 Robert and Mary Hennessey, in memory of Bev Horak
 George and Kathy Hogan, in memory of Bev Horak
 Erika Holmes
 Mana P. Holtz, in memory of Bunnie Aaze
 Frank Horak, in memory of Bev Horak
 Robert Hovey, in memory of Bunnie Aaze
 Lucinda Hruska-Claeys
 Bryan and Marya Huntington
 Heather Huseby, in memory of Bev Horak
 Deborah L. Huskins
 John and Marga Jaros
 Patrick and Patricia Johns, in memory of Bev Horak
 Johnson & Johnson Family of Companies
 Julie A. Johnson
 Lindley and Betty Johnson, in memory of Bev Horak
 Philip E. Johnson

Willie J. Johnson, in honor of Lisa Wheeler
 Eleise Jones, in memory of Bev Horak
 Krista Jordheim
 Paul and Carol Kaefer
 Carrie Ketel Opheim
 Karen Kilzer
 Kim Kishel-Geiger
 Karen Koepp, in memory of Richard E. Brown
 Duane Kramer
 Chris Krook
 George Krueger, in honor of Lisa Wheeler and Roberto Soliz
 Mary Beth and Leo Lake
 Carol R. Larsen
 Njia Lawrence-Porter, in honor of Torriion Amie
 Nancy Lawroski, in memory of Paul A. Desjardins
 Amy Lueders
 Katie and Dan Lynch, in memory of Bev Horak
 Justin Martin
 Noel Martinson
 Patricia McGowan
 Mary McKee, in memory of Bev Horak
 Sheryl McRoberts
 Robert and Mary Melander, in memory of Stephen X. Sullivan
 Craig and Deb Miller
 Steve and Marie Mondy, in memory of Joan P. Spivey
 Joanne and William Morgan
 Laura Morris, in honor of Lisa Wheeler
 Fusako Muro
 Murugi-Waititu Mutiga
 Phyllis and Thomas Myers, in memory of Stephen X. Sullivan
 Nissrine Nakib, in memory of Paul Desjardins
 Nikki Ness, in honor of Lisa Wheeler
 Gary and Stephanie Netolicky, in memory of Richard E. Brown
 Grace Ngunu
 Julius Ngwendson
 Daniel Norgard
 Jim and Shirley Norman, in memory of Bev Horak
 Jack Norton and Alexa Pragman
 Barry Okane, in memory of Bev Horak
 Mark Olson, in Honor of Manley Olson
 Thomas Orth
 Jody and Robert Orthey, in memory of Stephen X. Sullivan
 Maren M. Petersen
 Maureen Peterson, in memory of Dennis Peterson
 Gene Pietruszewski, in memory of Bev Horak
 Jim Plantan
 Ben and Lynne Poehling
 Nancy and Richard Pointer
 Lorna I. Redding
 Julie Reese, in memory of Bev Horak
 Lynette Reini-Grandell
 Mary and Charles Richards
 Frederick Roos
 Lisa Rude
 Ryan Companies
 Javier Salinas Vega
 Lori Sanchez, in honor of All the Dreamers!
 Cari Sandstrom, in memory of Bev Horak
 Ruth A. Sanford
 Lindsey Siegfried de Sanchez
 Elizabeth Sill, in memory of Bev Horak
 Niles and Virginia Smith
 Bridget Soja, in memory of Richard E. Brown
 Lori A. Spaude Danielson
 Joan C. Spell, in memory of Richard E. Brown
 Mark Spencer
 Richard C. Stanville
 Allan C. Staples
 Theresa and Pat Steig
 Matthew D. Stuber
 Sally Sudo, in memory of Bunnie Aaze
 Jenny Sun

Tobi Tanzer
 William F. Telleen
 Bev and Dale Thronndon
 Tim Thull
 Debbie and David Tillman, in honor of Lisa Wheeler
 Angie Tix
 Mike Truman, in memory of Stephen X. Sullivan
 UnitedHealth Group
 Joan Utvik, in memory of Bev Horak
 Steven J. Vadnais
 Viacom CBS
 John and Linda Villas, in honor of Josh Villas
 Doug Wagner
 Cindy and Gary Warnberg, in memory of Debra Olson
 William Weese
 Carolyn and Paul Wiggan
 Elizabeth Wilson
 Stephen Winckelman and Katherine Klink
 Judith and James Winsor
 Kay Wolfe
 Garry and Diane Yohn
 Cindy Zoul

Honor Roll Gifts (\$1 to \$99)

Kathleen Amand
 Anonymous Donor
 Kent and Melinda Ashland
 Kathy Austin
 Rod Balderree, in memory of Bunnie Aaze
 Linda Baughman
 Rachel Becker, in honor of Lisa Wheeler
 Candy and Tim Bell
 Pamela J. Bentzien
 Mary M. Berger
 Scott Bergeron, in memory of Bev Horak
 Chastity Berquist
 Helen Bevan, in memory of Bev Horak
 Kathleen Bielmeier
 Henry and Benita Black, in memory of Paul Desjardins
 Richard and Catherine Black
 Frances and Byron Bland
 Betty and Randy Blazer
 Philip M. Bly
 Peg Bohanon
 Judy and Richard Borgen
 Brave Souls Photography
 Julie and Kenneth Brown
 Jeffrey and Marge Bry, in honor of Debra Olson
 Sharon Bullford
 Rosalie Bunge
 Ellen Carey, in honor of Lisa Wheeler
 Peter A. Carlson, in memory of Bev Horak
 Cynthia J. Carow-Schiebe
 Mary Cavouras, in memory of Richard E. Brown
 Myron and Aileen China
 Kathleen B. Coate, in memory of Will Shaw
 Kristen L. Cooper
 Maryetta and Guy Coursolle, in memory of Bev Horak
 Elaine Cox, in memory of Bunnie Aaze
 Kathy and Gary Crask
 Riley Dahlheimer, in honor of Lisa Wheeler
 Diane Darr
 Val and Daymond Dean, in memory of Susan R. Gekas
 Jenee Depetra
 Maureen Dufresne, in memory of Bev Horak
 Richard D. Dunning
 Megan Eischen
 Erin Ellison, in honor of Torriion Amie
 Mary Engelhard and Bob Lowe
 Mr. and Mrs. John England, in memory of Bev Horak
 Suzuko M. Erickson
 Joseph and Susan Eschenbacher, in memory of Bev Horak
 Ignatius I. Esole

Honor Roll Gifts (continued)

Lavonne Evenson
 Jennifer Facciani
 Mary Ferber, in memory of Bev Horak
 Deborah K. Filla, in memory of Bev Horak
 Linda Fletcher
 Michael W. Flom, in memory of Paul Desjardins
 Eleanor Gaines
 Paula J. Garland
 Gerald and Janice Gordon
 Al and Jo Grossbauer
 James B. Gustafson
 Andrea Hams
 Phillip Handy
 Sharon Harris
 Kristin and Grant Hartley, in memory of Bev Horak
 Sharon F. Harvey
 Reta and John Hauer, in memory of Bev Horak
 Cathy Hayden, in memory of Debra Olson
 Michael and Vicki Heisenfelt
 Carolyn and Robert Herman
 Jeff and Sue Hine
 Larry Hines
 Kathleen Holland, in memory of Bev Horak
 Diane Horak, in memory of Bev Horak
 Barb Hustad, in memory of Bev Horak
 Roberta Inerra, in memory of Bev Horak
 Maureen Jansen, in memory of Bev Horak
 James and Patricia Johnson, in memory of Bev Horak
 Geoff and Chreese Jones, in memory of Larry Jodsaas and Lee Kopp
 William M. Journey
 Marcia and Cary Kangas, in memory of Stephen X. Sullivan
 Rita Karnick, in memory of Bev Horak
 Adam Kauwenberg-Marsnik
 Shannon Kielblock
 Margaret Komives, in memory of Bev Horak
 Barb Kraemer, in memory of Bev Horak
 Diane and Bradley Kramer, in memory of Stephen X. Sullivan

Heidi and Robert Kreutzer
 William and Toyo Lang, in memory of Bunnie Aaze
 Kevin D. Lee
 Diane and James Lerberg
 Lee Lindsey, in honor of Lisa Wheeler
 John and Sharon Liska, in memory of Bev Horak
 Sarah Martin
 Elizabeth and Roger Maulik, in memory of Bev Horak
 Howard J. McConkey, in memory of Paul Desjardins
 Shereese McIntosh
 Judy McMillan
 Cecelia B. Meehan
 Cindy Mertens
 Jim and Jodi Muelken, in memory of Debra Olson
 Marietta Murphy
 Mary and Bud Nakasone
 Rachel Nelson
 Dick and Marit Nowlin, in memory of Jason Horak
 Gary O'Driscoll
 Eugene and Cheri Osekowsky, in memory of Richard E. Brown
 Victor Padron
 Larry Pantasari, in memory of Debra Olson
 Judy Pappenfrus, in memory of Bev Horak
 John and Laura Pasternacki, in memory of Bev Horak
 Nancy and Robert Pates
 Gary Pegoda, in memory of Bunnie Aaze
 Ernie Pepel, in memory of Debra Olson
 Angie Proehl, in honor of Lisa Wheeler
 Michael Przybylski, in memory of Bev Horak
 Pierre Regnier, in memory of Bev Horak
 Jane Travers Render
 Mark and Julie Ritter
 Ava Rosenblum
 Jeannine and James Roufs
 Carol Ann Sander, in memory of David Docter

Alice Sandgrund, in memory of Paul Desjardins
 Catherine A. Satern
 Theresa Schneider
 Ryan Schumacher
 Diane Sewall
 Susan Seymour
 Thomas and Sharon Speich, in memory of Bev Horak
 Kate and Andy Staples, in memory of Bev Horak
 Derek Steele
 RaeDean Stockert, in honor of Lisa Wheeler
 Stop Loss Trading
 Judy and Frank Stucki
 Nobuyuki and Kumiko Sugisaka
 James Sutton
 Amy Swanson
 James and Melanie Taillefer
 Barbara Thompson, in memory of Bev Horak
 Joann Toy
 Brenda Trafton, in honor of Lisa Wheeler
 Peter and Cheri Ulmen
 Steven and Rose Ann Underhill
 Elizabeth Van Hoever
 Vanessa Vostmyer
 Samuel and Patricia Walker, in memory of Bev Horak
 Velvet Walker
 Susan G. Warner
 Geri Wilson
 Amber Wing, in honor of Lisa Wheeler
 Anne and Steven Wisker
 Glenn A. Wisser, in memory of Nat R. Wisser
 Peggy and Gregg Wohlers, in memory of Bev Horak
 Anna Yang
 Jim Zerwas, in memory of Bev Horak
 Beverly and Edward Zimmerman, in memory of Stephen X. Sullivan

Note: We work diligently to ensure all names are listed correctly. Please accept our sincere apology for any errors or omissions and contact us so we may correct future listings.

JOIN THE LEGACY CIRCLE AND MAKE A FOREVER IMPACT

The Legacy Circle is a special group of donors who have included gifts to the Normandale Community College Foundation in their estate plans. Joining is as easy as designating the Normandale Foundation as a beneficiary of your:

- will
- revocable living trust, charitable remainder trust or charitable lead trust
- charitable gift annuity
- 401K, IRA or other qualified plan
- life insurance policy
- savings account or certificate of deposit
- real estate
- other assets

For more information or to request a copy of our Legacy Circle enrollment form, please contact Associate Executive Director Jane Fenton at **952-358-8143** or jane.fenton@normandale.edu.

We are deeply grateful to the Legacy Circle members (listed at right) for ensuring that Normandale continues to thrive for generations to come.

Anonymous
 Mark Adkins
 Joyce B. Carey†
 Gene Carlson†
 Philip and Doris Danielson†
 Kevin V. Downey† Estate
 Hoium-Forslin Family
 Donald and Ramona Johnstone†
 Susan H. Krook
 Ruth Kwait†
Craig and Deb Miller*
 Tom and Sandy Mooney
Catherine A. Satern*
 Allan and Debby Schneider
 Mary Ellen Seth†
 Andrea Specht
 Joan P. Spivey†
Axel and Lori Steuer*
 Mae and Sylvester Weiss†

* New in 2021
 † In Remembrance

FISCAL YEAR 2021

STATEMENT OF FINANCIAL POSITION

ASSETS	TOTAL
Current Assets	\$ 226,838
Investments	\$ 5,064,529
TOTAL ASSETS	\$ 5,291,367
LIABILITIES AND NET ASSETS	
Total Liabilities	\$ 28,260
Total Net Assets	\$ 5,263,107
TOTAL LIABILITIES AND NET ASSETS	\$ 5,291,367



714

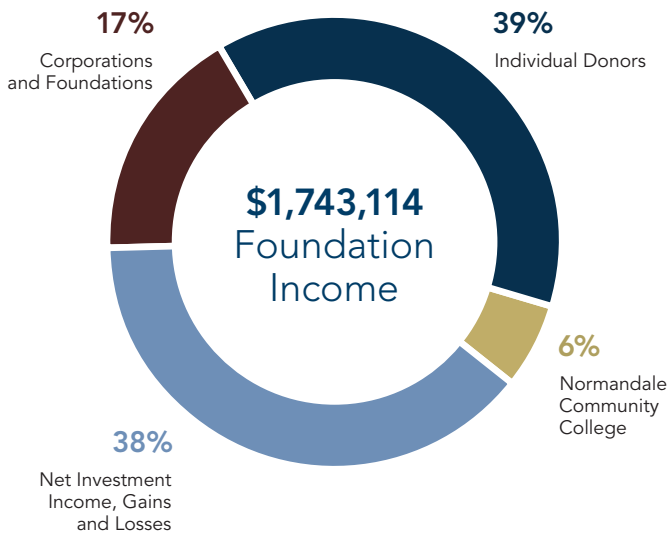
Scholarships and
Departmental
Awards Provided



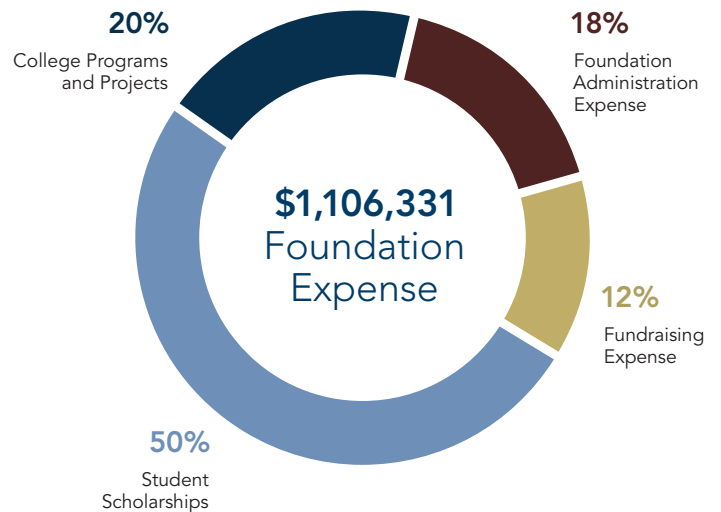
\$774,749

Provided in
Scholarship, Program
and Project Support

STATEMENT OF ACTIVITIES



as percent of total revenue and support



as percent of total expenses



NORMANDALE

COMMUNITY COLLEGE FOUNDATION

9700 France Avenue South
Bloomington, MN 55431-4399

www.normandale.edu/foundation

Nonprofit Org.
U.S. Postage
PAID
Twin Cities, MN
Permit No. 913

IN MEMORIAM

In gratitude for their service and passion for Normandale, we recognize the following faculty, staff, retirees and major benefactors who have passed away July 1, 2020, through June 30, 2021.

Faculty & Staff

Dale Brown, Art
Stephen Murray, Admissions
Stephen Sullivan, Law Enforcement

Retirees

David Docter, Music
Mary Ernst, Accounting
Judy Lacher, Physical Education
Kent Maffitt, Physics

Barbara Sarff, Secretary
Jim Wallace, Theatre
Beverly Wallis, Secretary

Major Benefactors

Beverly Horak, wife of former
President Tom Horak



REMEMBERING MARY ERNST

It is with a heavy heart and spirit that we report the passing of Mary Ernst this past year. Mary was not only a 34-year Normandale retiree from the Accounting Department, but she was also a dedicated volunteer for the Normandale Foundation. She cheerfully took on any task that was asked of her. Mary cataloged and copied all student thank-you notes and made sure they got mailed to donors. She worked tirelessly on the celebration of Normandale's 50th anniversary and helped distribute over 750 laptops to students in the summer of 2020. Her dedication to Normandale and its students was extraordinary.

Mary was also a generous friend and family member. She supported many local causes with time and funds. She also found time to complete the MS Bike Ride across Minnesota every year. We suspect her dream job was her part-time job with the Minnesota Twins, and she, of course, won the "Best Worker" award one year. She was a crucial support to her aging parents, plus a loving aunt and sister. Mary leaves a gaping hole in many people's lives.

In her honor, the Normandale Foundation renamed her favorite scholarship, one she championed for many years. The Mary Ernst Memorial Scholarship awards \$1,000 per year to a student who is in financial need, whose goal is to obtain a two-year degree and who is the first in their family to go to college.